

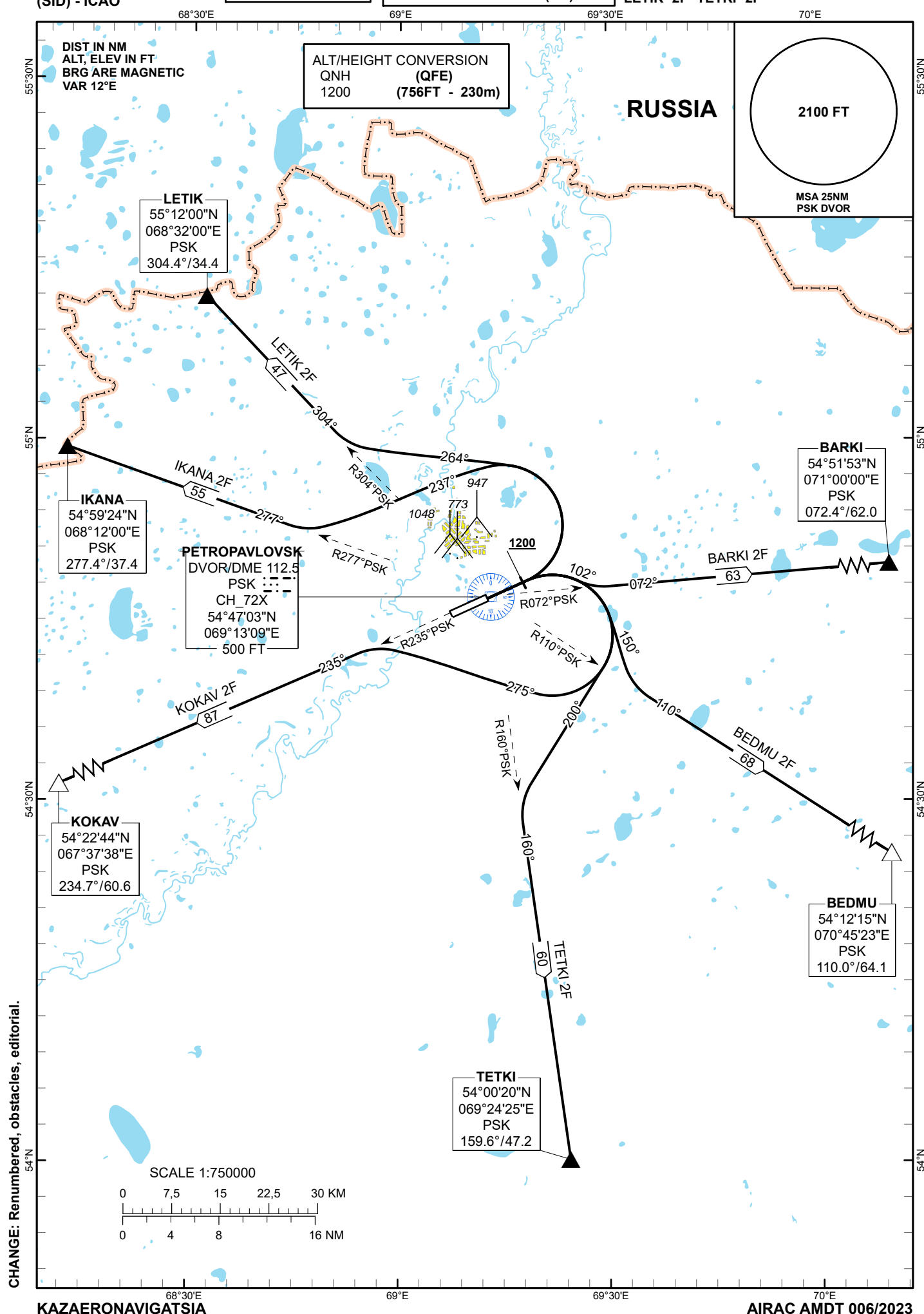
STANDARD DEPARTURE  
CHART - INSTRUMENT  
(SID) - ICAO

TRANSITION ALTITUDE  
10000 FT

PETROPAVLOVSK TOWER 123.7  
PETROPAVLOVSK ATIS (EN) 127.4  
PETROPAVLOVSK ATIS (RU) 118.3

BARKI 2F BEDMU 2F  
IKANA 2F KOKAV 2F  
LETIK 2F TETKI 2F

PETROPAVLOVSK  
RWY 05



**STANDARD DEPARTURE ROUTES – INSTRUMENT (SID)  
PETROPAVLOVSK RWY 05**

**BARKI 2F**

After take-off climb straight ahead to 1200 FT, turn RIGHT on track 102° until intercept R072°PSK, proceed on track 072° to BARKI (N545153 E0710000).

**BEDMU 2F**

After take-off climb straight ahead to 1200 FT, turn RIGHT on track 150° until intercept R110°PSK, proceed on track 110° to BEDMU (N541215 E0704523).

**TETKI 2F**

After take-off climb straight ahead to 1200 FT, turn RIGHT on track 200° until intercept R160°PSK, proceed on track 160° to TETKI (N540020 E0692425).

**KOKAV 2F**

After take-off climb straight ahead to 1200 FT, turn RIGHT on track 275° until intercept R235°PSK, proceed on track 235° to KOKAV (N542244 E0673738).

**IKANA 2F**

After take-off climb straight ahead to 1200 FT, turn LEFT on track 237° until intercept R277°PSK, proceed on track 277° to IKANA (N545924 E0681200).

**LETIK 2F**

After take-off climb straight ahead to 1200 FT, turn LEFT on track 264° until intercept R304°PSK, proceed on track 304° to LETIK (N551200 E0683200)